

Manual Torque Wrench Prosthetic

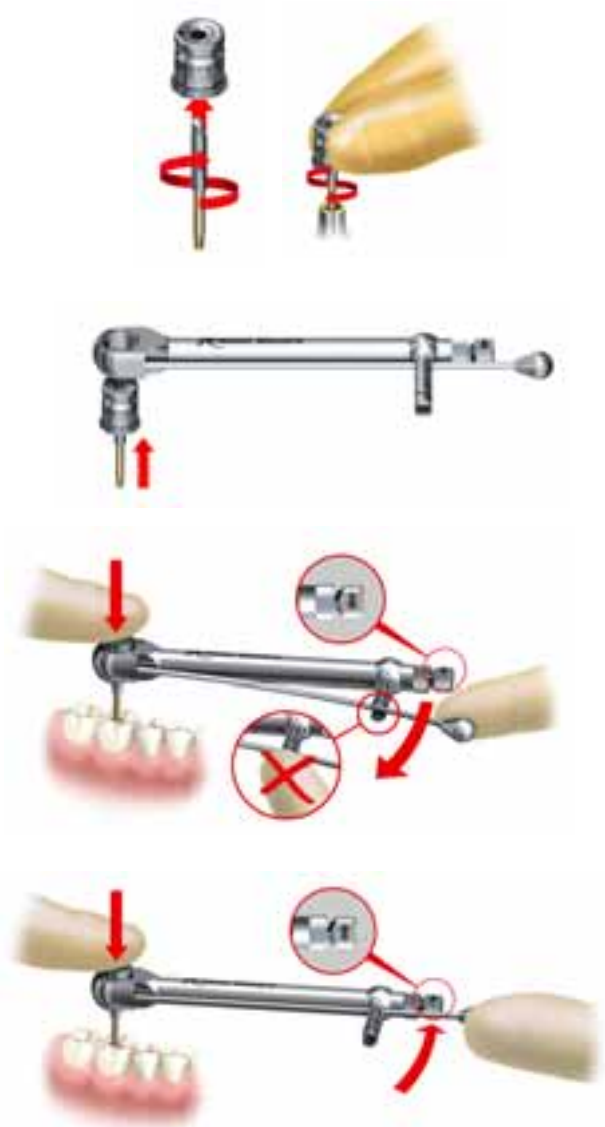
For restorative procedures, tightening abutment and prosthetic screws to the recommended torque specifications will more effectively control screw-joint integrity during patient function.

The **Manual Torque Wrench** is a convenient tool for achieving the desired torque. Easy to use with a restorative scale denoting 15 Ncm and 35 Ncm. The **Manual Torque Wrench Adapter** is compatible with all machine screwdrivers.

- Insert the screwdriver.
- For correct handling and tightening torque, see the manual for the individual product.

Warning! *The use of the wrench body instead of the level arm may result in excessive torque being transferred to the screw and/or implant site.*

- To loosen, use the wrench with the direction indicator arrow pointing counter clockwise.



OsseoSet™ 200

The **OsseoSet™ 200** is a complete drilling unit for dental work. For restorative applications, all abutment screws and prosthetic screws are tightened electronically to the proper specifications.



Torque Guide

<p>Plastic Temporary Abutment Plastic Temporary Coping Healing Abutment Healing Cap</p>					<p>Manual</p>			
<p>Prosthetic Screws for final restorations Titanium Temporary Coping</p>					 <p>15 Ncm</p>			
<p>Ball Abutment 17° Multi-unit Abutment 30° Multi-unit Abutment</p>								
<p>All other Abutments</p>								 <p>35 Ncm</p>